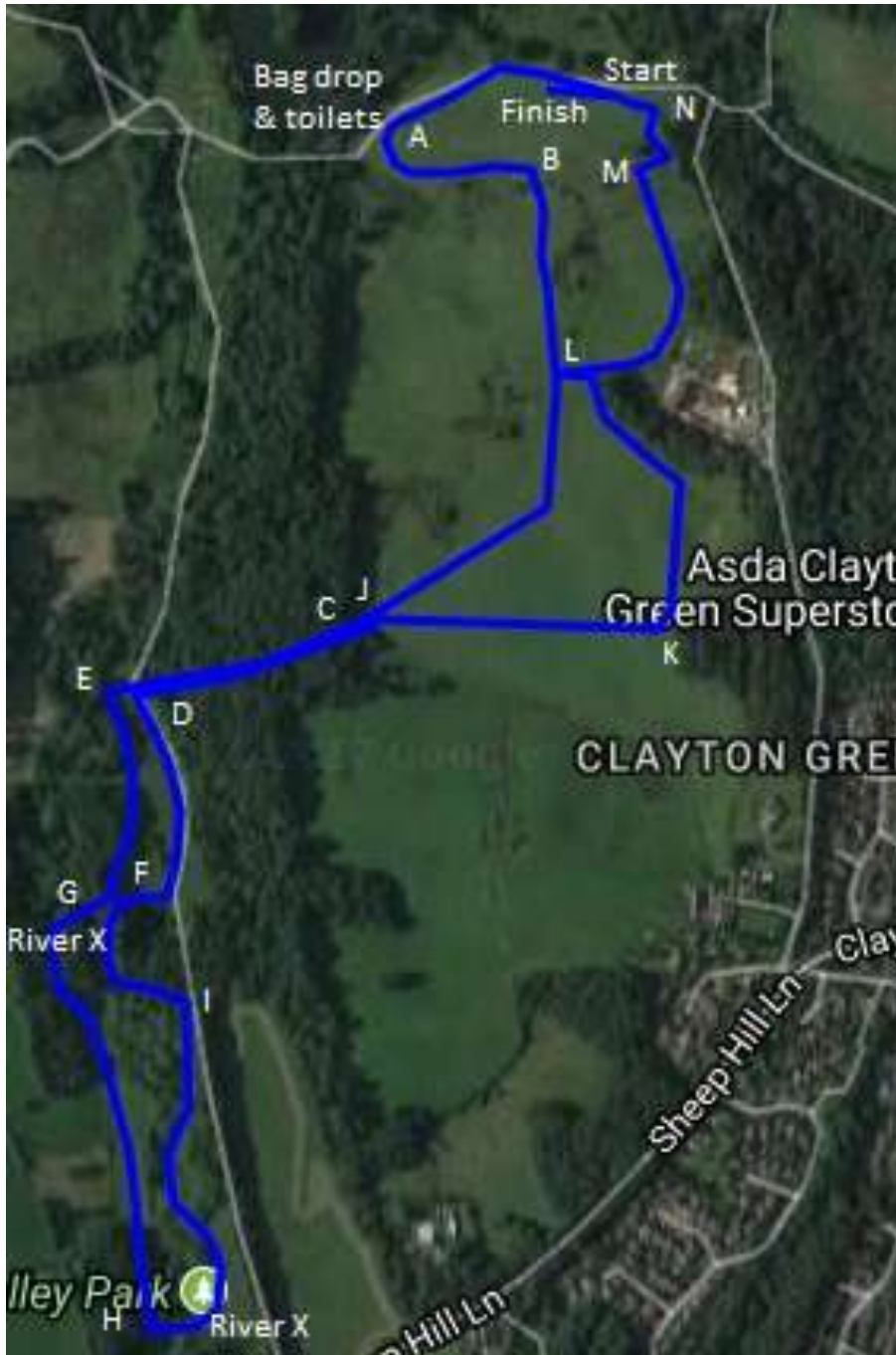


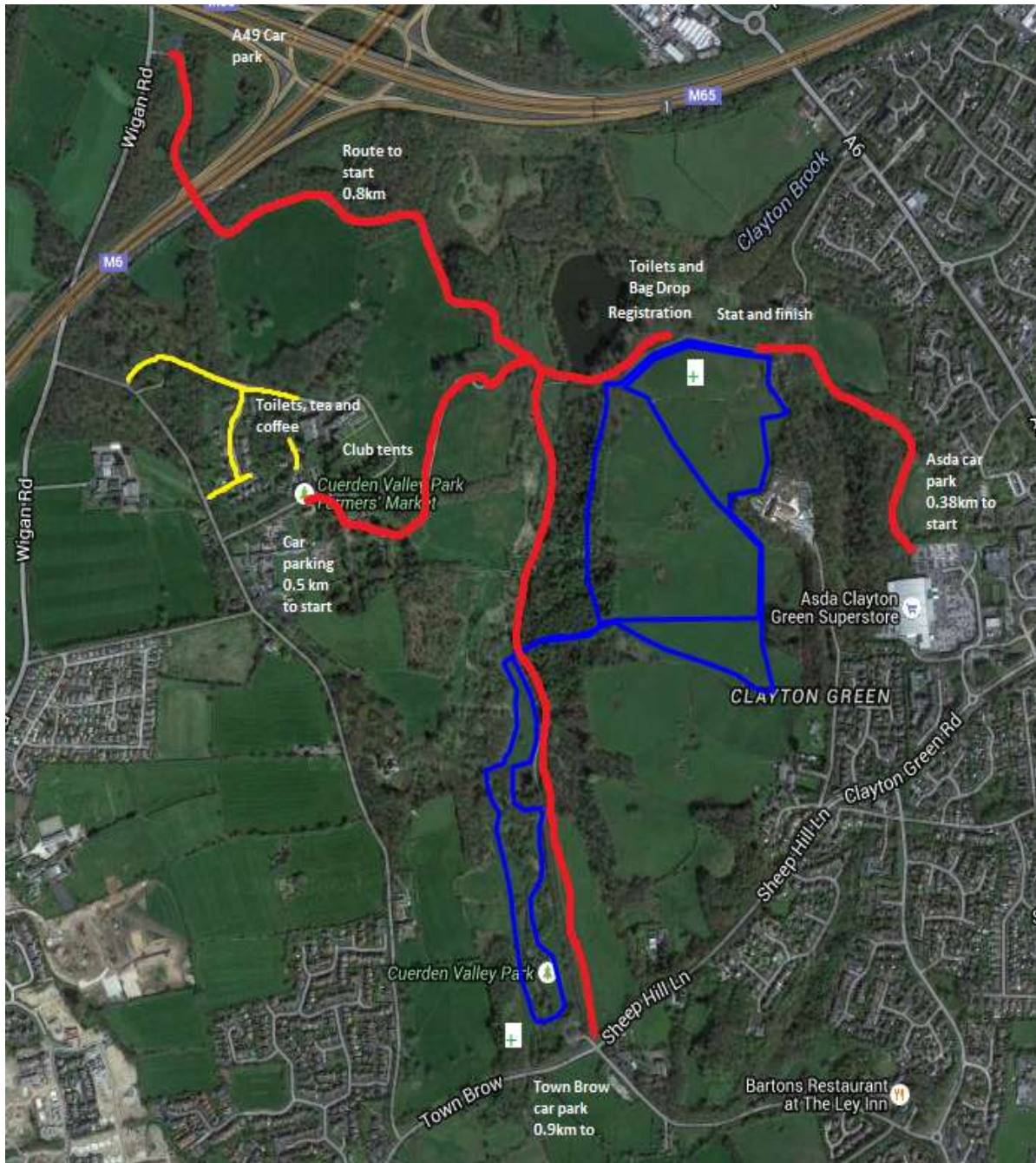
Cuerden Valley Cross Country



Course Description




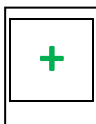
Race 1 U11 G	1 Medium Lap	Start ABLJKLMN Finish	1.8KM
Race 2 U11 B	1 Medium Lap	Start ABLJKLMN Finish	1.8KM
Race 3 U13 G	1 short lap, 1 medium lap	Start ABLMN + ABLJKLMN Finish	2.7KM
Race 4 U13 B+U15 G	2 medium laps	Start ABLJKLMN x2 Finish	3.6KM
Race 5 U15 B + U17W	2 short laps, 1 medium lap	Start ABLMN x2+ ABLJKLMN Finish	3.7KM
Race 6 U17 M + U20 W + SW + VM + V70 M	1 Medium lap, 1 long lap	Start ABLJKLMN + ABLJCDEFGHIFDCJKLMN Finish	5.5KM
Race 7 U20M + SM + VM	1 short lap, 1 medium, 2 long laps,	Start ABLMN + ABLJKLMN + ABLJCDEFGHIFDCJKLMNx2 Finish	10KM

Cuerden Valley Cross Country



Location of Facilities in Cueden Valley

KEY

-  Course
-  Pedestrian routes to course
-  Private road strictly no parking
-  First Aid